

NOVEMBER, 2011, Activities Update

The Edmonton and Area Land Trust (EALT) is the non-profit conservation organization for the Edmonton Region. www.ealt.ca

Alberta Ecotrust making a Film about EALT

On September 22, 2011, Alberta Ecotrust filmed a short story about EALT and the work that we do. This took place at our Glory Hills property. The Alberta Ecotrust generously provided funding for the acquisition costs of this property. The filmmaker, Bart Robinson, took film of the property and interviewed Board Chair Marg Reine, Executive Director Pam Wight, and Project Coordinator Morgan Traverse. Three volunteers also joined the filming party.



Bart Robinson preparing staff for interviews at the Glory Hills property. (Photo: Ian Mackenzie)

presenting a barrier to wildlife. Twelve volunteers came out along with EALT and NCC staff. In the afternoon an interpretive walk was led by EALT Project Coordinator, Morgan Traverse where volunteers were able to pick berries and learn about some of the plants and animals that can be found on the property.



Hauling out barbed wire from the forest at the Hicks property. (Photos: Julia Frohlich)

Unraveling the Wire Event a Great Success



Volunteers pause in their work for a group picture and an interpretive nature walk with EALT's Morgan Traverse (photos: Julia Frohlich)

On August 13th, 2011, EALT and the NCC held a volunteer event at our jointly owned Hicks property. The day was spent removing barbed wire fences that were

Prospective Properties Visited

EALT has increasingly been asked to consider accepting donations of properties or Conservation Easements, by interested landowners. This requires office research at first, but then site visits. We find ourselves increasingly busy in evaluating properties, and welcome those with field expertise contacting us to volunteer for such activities.



Potential property in Leduc County

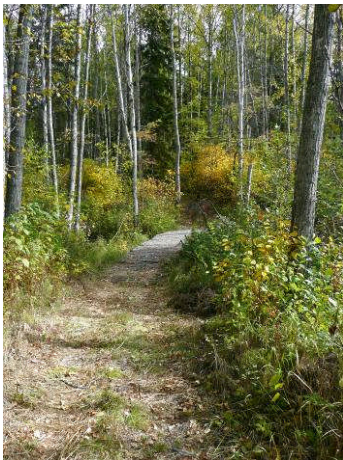


Capital Region Land Securement



New born sparrows in nest found in the grasslands

2011 was a successful year for EALT, as we were able to acquire ecologically valuable land around the Capital Region. 2012 may show similar successes thanks to generous donors, and the Ecological Gift Program of Canada. This fall EALT has visited several potential properties that could add to our inventory of permanently protected natural areas. Like our currently held properties, these areas provide invaluable habitat for the native plants and animals that represent our beautiful country and provide an opportunity for these species to prosper for the benefit of future generations.



Fall colours on potential Parkland property, and conks on aspen

EALT Receives CLRA Donation



The Canadian Land Reclamation Association recently donated the proceeds of their summer golf tournament to EALT.

The CLRA wanted to see the funds go to a project related to reclamation, and felt fencing-related costs were appropriate. EALT certainly has a need to work on fencing, due to issues of neighbours' cattle breaking through their fences, and we hope to produce educational materials related to this topic, too. Many thanks to all!



CLRA members having fun at their summer golf tournament

Why don't you consider contributing the proceeds to EALT, when you next hold a social, or educational, or other event? Feel good and do good for conservation!

EALT Annual Outreach Campaign Underway

In the face of increasing approaches by interested land donors, as well as our rising property stewarding needs, as we succeed in conserving lands, EALT is asking for funds to help offset our costs. **PLEASE GIVE A GIFT FOR CONSERVATION!**

You can make an electronic donation via our website, or send a cheque to 9910-103 St, Edmonton, AB T5K 2V7.

Besides making a direct donation, you can also give via one of the endowments the Edmonton Community Foundation holds on behalf of EALT, or even create your own! For example, recently, a local family set up the **Russell Family Conservation Endowment** to EALT "so all of our families' children and grandchildren could continue to explore nature and enjoy the outdoors". Spokesperson Marg Reine quoted John Muir in explaining why: "**Nature's peace will flow into you as sunshine flows into trees**". <http://www.ealt.ca/news/2011/oct/31/a/>

Potential property visited in Leduc County

